

GL2 SCIENCE STUDENT TEXT

Published by
The Rafiki Foundation

2nd Edition

GL2 Science Student Pages

© 2021, 2016 by the Rafiki® Foundation, Inc.

Front Cover

Magi Bearing Gifts, Panel from a Roman Sarcophagus, 4th Century

Artist: Unknown, Title: Magi Bearing Gifts

Collection: From the Cemetery of St. Agnes, Rome

Public Domain

The Rafiki School Curriculum in all forms is the property of the Rafiki Foundation, Inc. No portion may be reproduced or translated without the written permission of the Rafiki Foundation Home Office, U.S.A.

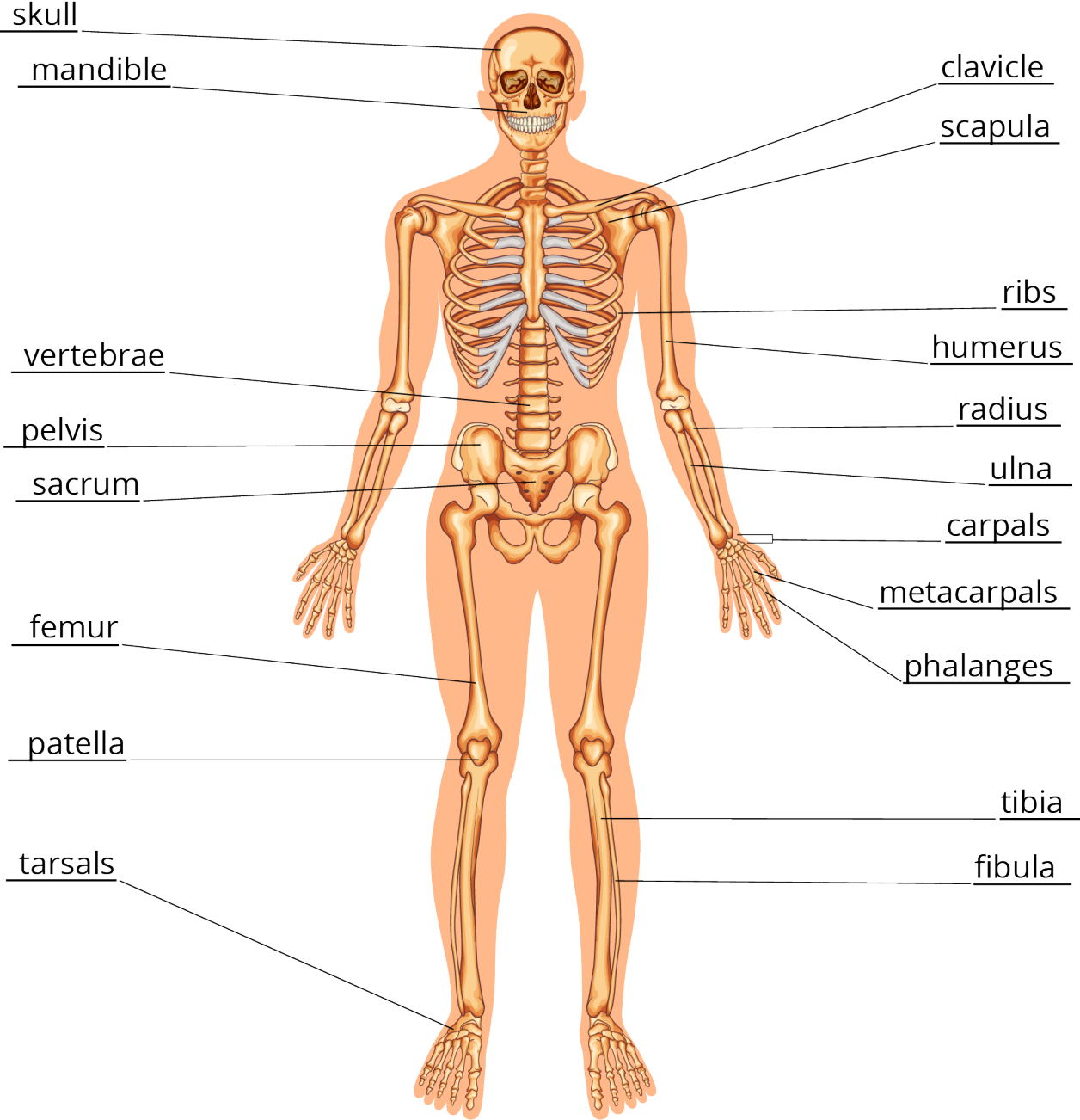
Scripture quotations are from *The Holy Bible, English Standard Version*®, copyright© 2001 by Crossway Bibles, a publishing ministry of Good News Publishers. Used by permission. All rights reserved.

Name: _____ Date: _____

U1L7 Handout The Scientific Investigation Rubric

3 points Almost always 	2 points Some of the time	1 point Very little of the time	Teamwork: The student was able to work cooperatively with the group and remain on task throughout most of the investigation.
3 points Almost always 	2 points Some of the measurements were accurate and some of the instruments were used properly	1 point Very few accurate measurements - need to try again!	Gathering: The team accurately measured the different objects and knew how to use the instruments for observation
3 points Almost all details were correctly recorded including measurements. 	2 points Some of the measurements were accurately recorded.	1 point Few details recorded correctly.	Recording: The team was able to accurately record the main details of the investigation in science journal.
3 points Almost always 	2 points Some of the time	1 point Very little of the time	The team followed established safety procedures. They left the lab neat.
3 points Very clear reporting. Included information on what was being observed, the question being answered, the measurements, and the findings.	2 points Somewhat clear. Included what was being observed and some measurements and a conclusion.	1 point Not very clear. Few measurements and no conclusion.	Reporting: The team clearly explained the results.

U2L1 Human Skeleton



The **human skeleton** consists of 206 bones. We are actually born with more bones (about 300), but many fuse together as a child grows up. These bones support your body and allow you to move. Bones contain a lot of **calcium** (an element found in milk, broccoli, and other foods). Bones manufacture blood cells and store important minerals.

The longest bone in our bodies is the **femur** (thigh bone). The smallest bone is the **stirrup bone inside the ear**. Each hand has 27 bones in it. Your nose and ears are not made of bone; they are made of cartilage, a flexible substance that is not as hard as bone.

Joints: Bones are connected to other bones at joints. There are many different types of joints, including fixed joints (such as in the skull, which consists of many bones), hinged joints (such as in the fingers and toes), and ball-and-socket joints (such as the shoulders and hips).

Differences in males and females: Males and females have slightly different skeletons, including a different elbow angle. Males have slightly thicker and longer legs and arms; females have a wider pelvis and a larger space within the pelvis, through which babies travel when they are born.